

Figure S1, *Campsurus* Eaton (Molineri & Salles 2013). Trees, vicariant events and TVEs found. Numbers on the clades are group support values obtained from 250 replicates of jackknife (only positive values shown).

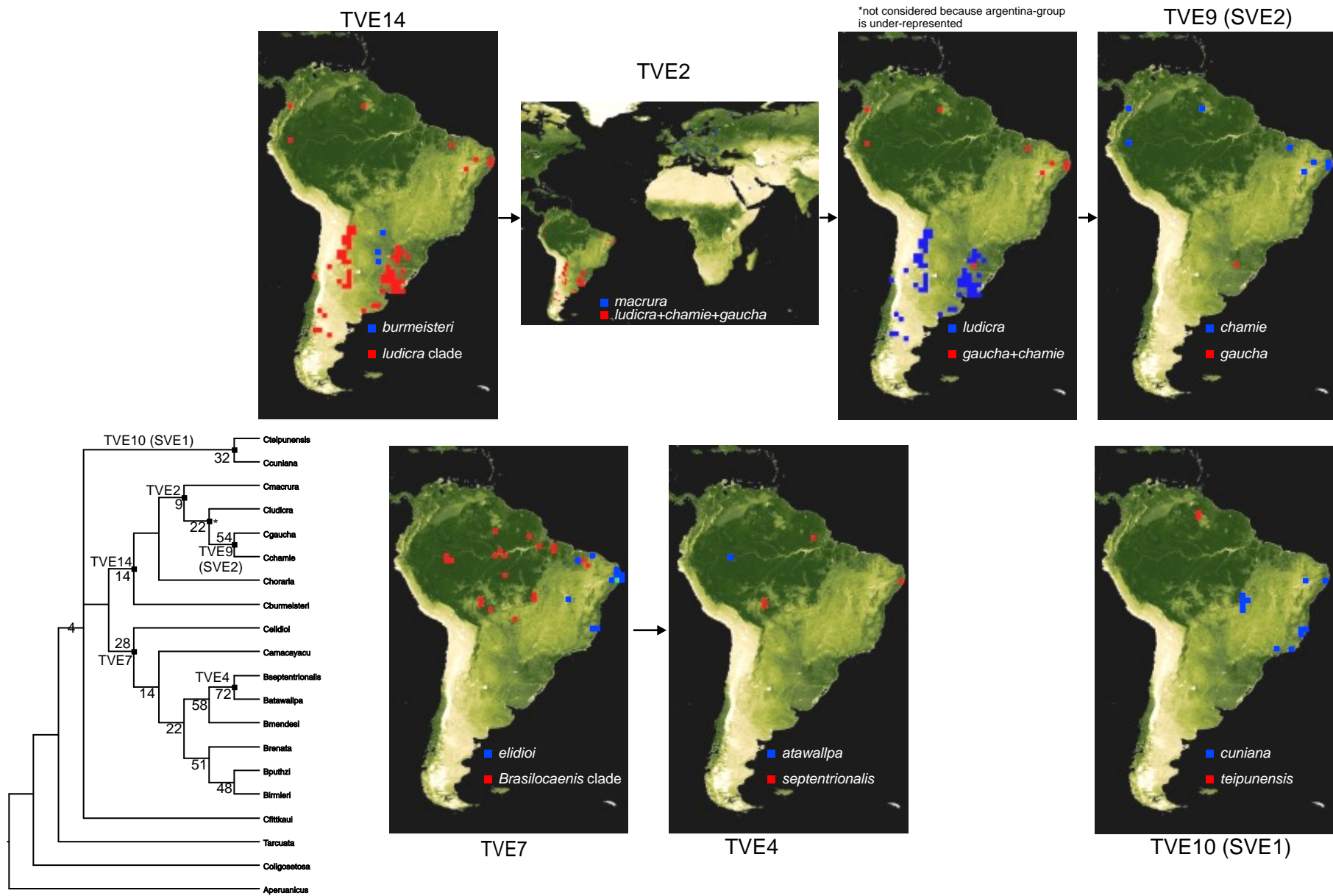


Fig. S2: *Caenis* Stephens and *Brasilocaenis* Puthz (Lima et al. 2019). Trees, vicariant events and TVEs found. Numbers on the clades are group support values obtained from 250 replicates of jackknife (only positive values shown).

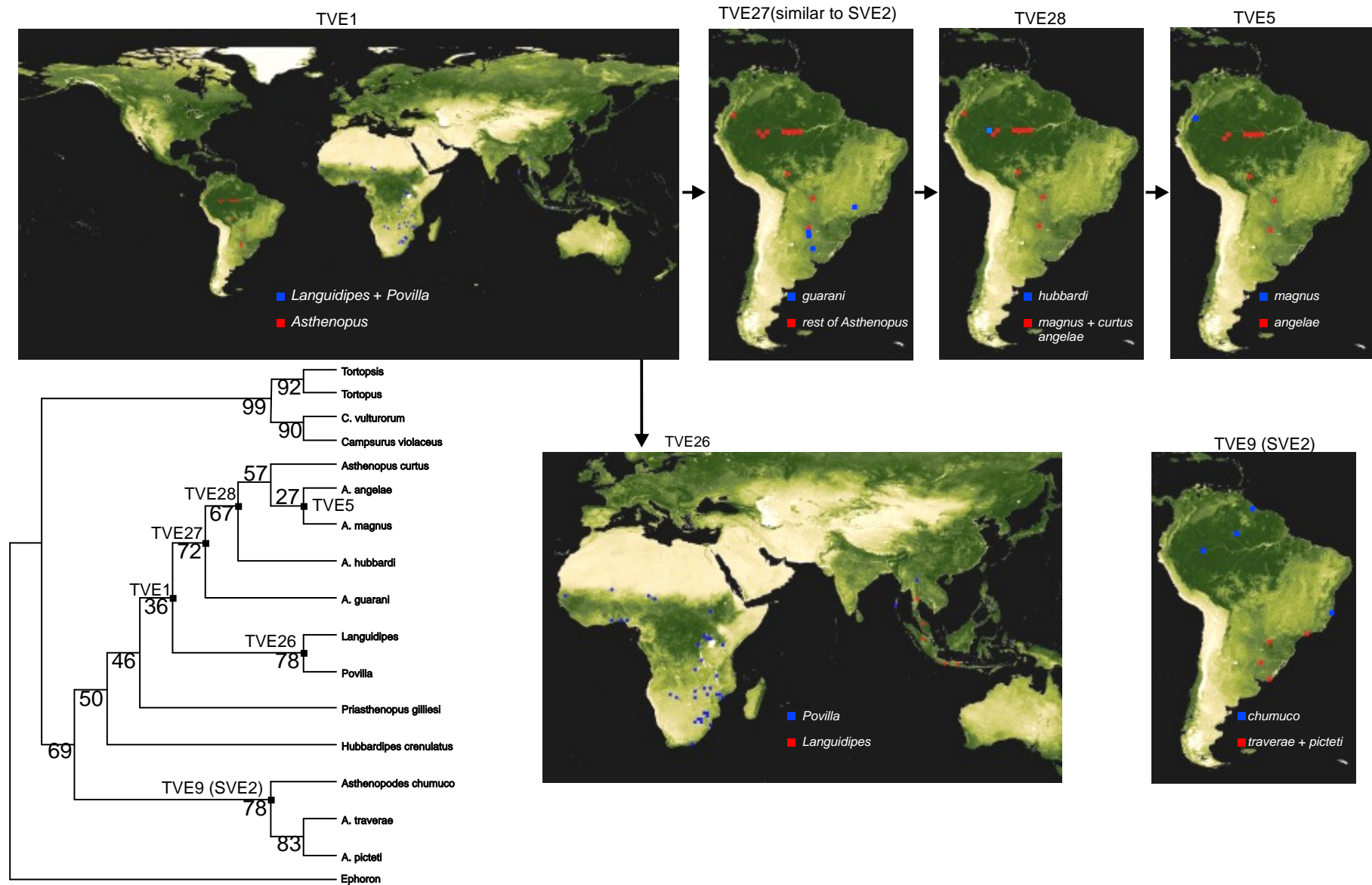


Figure S3, Asthenopodinae (Molineri et al. 2015). Trees, vicariant events and TVEs found. Numbers on the clades are group support values obtained from 250 replicates of jackknife (only positive values shown).

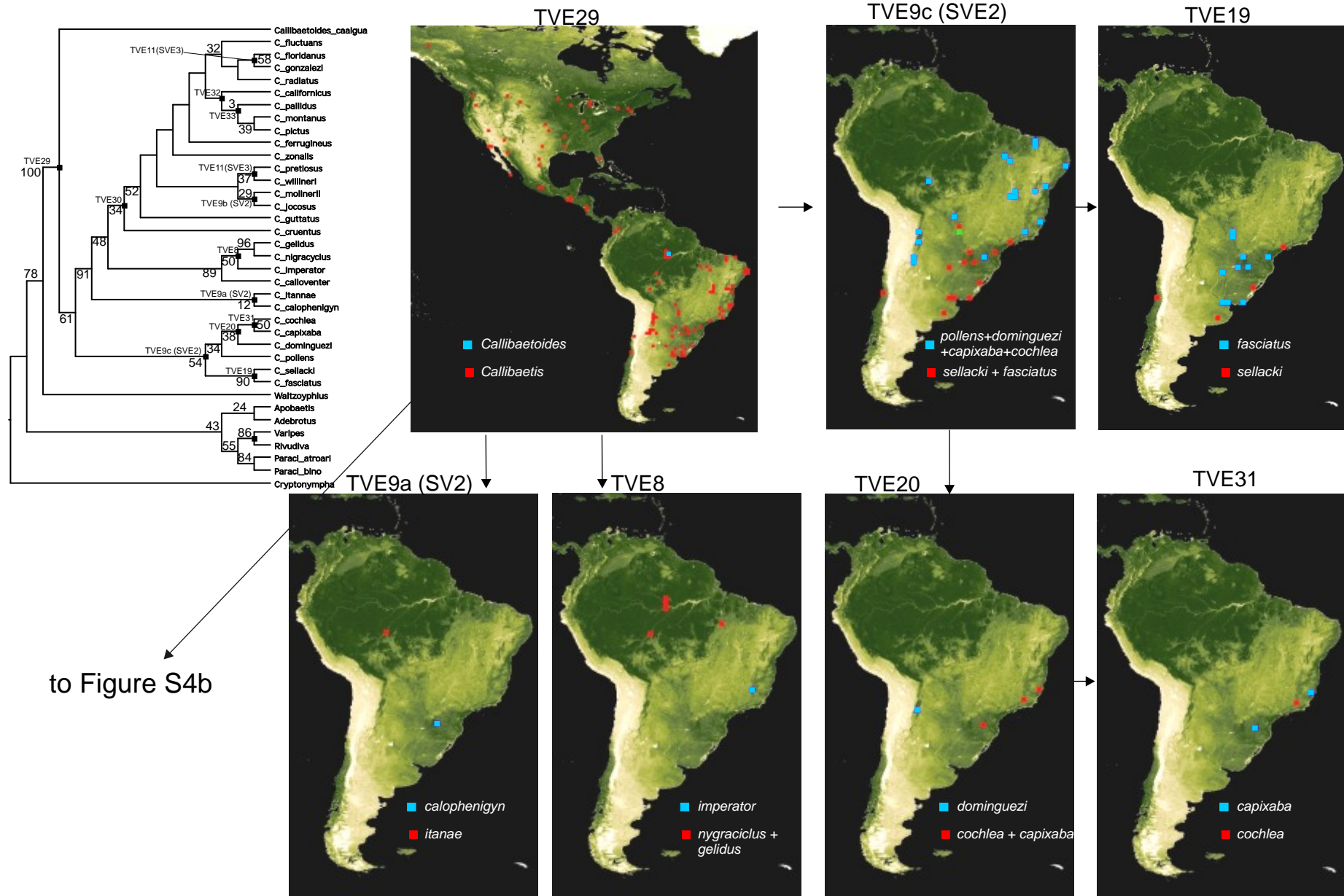


Figure S4a, *Callibaetis* (in part, Cruz et al. 2017). Trees, vicariant events and TVEs found. Numbers on the clades are group support values obtained from 250 replicates of jackknife (only positive values shown).

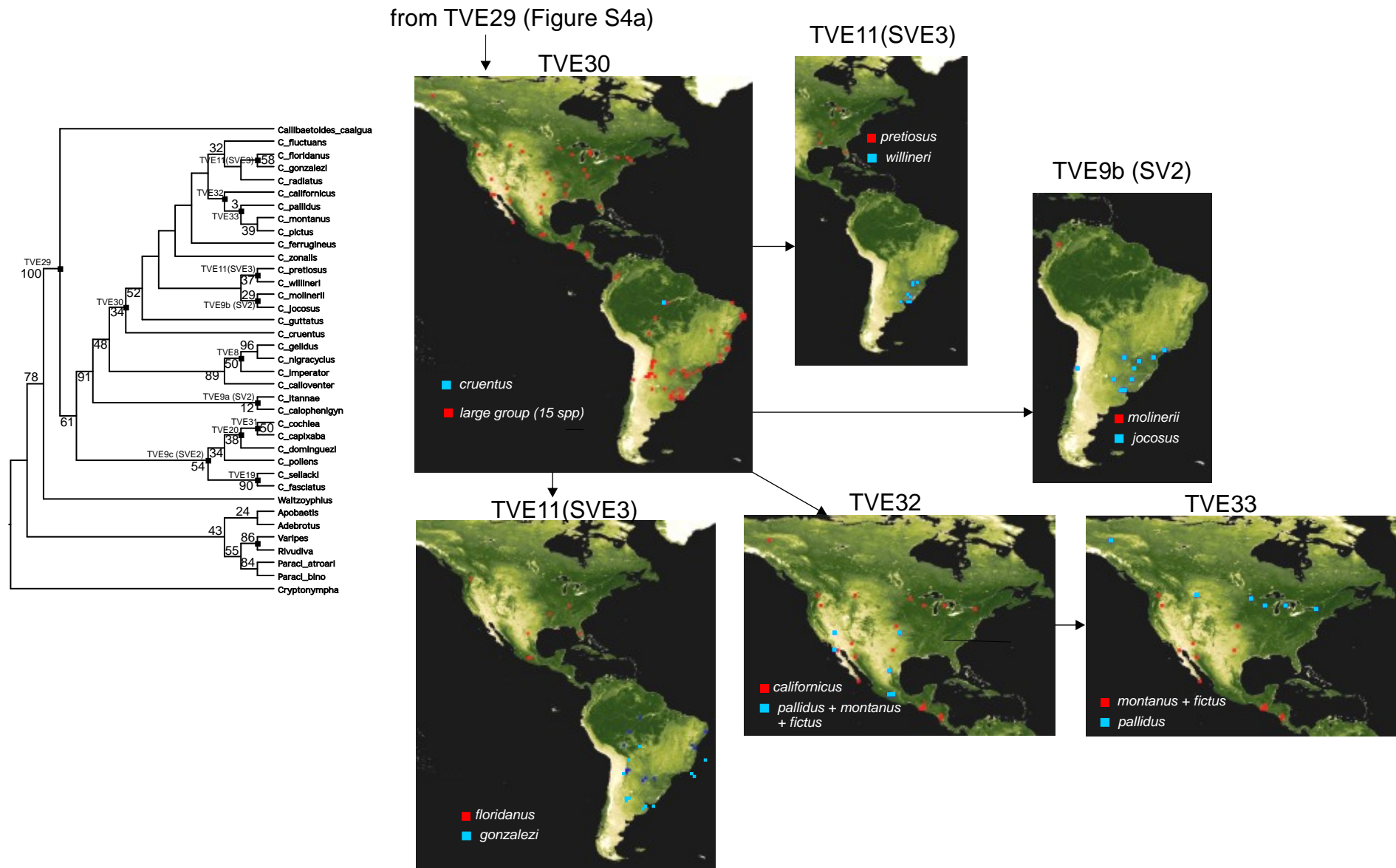


Fig. S4b, Callibaetis (in part, Cruz et al. 2017). Trees, vicariant events and TVEs found. Numbers on the clades are group support values obtained from 250 replicates of jackknife (only positive values shown).

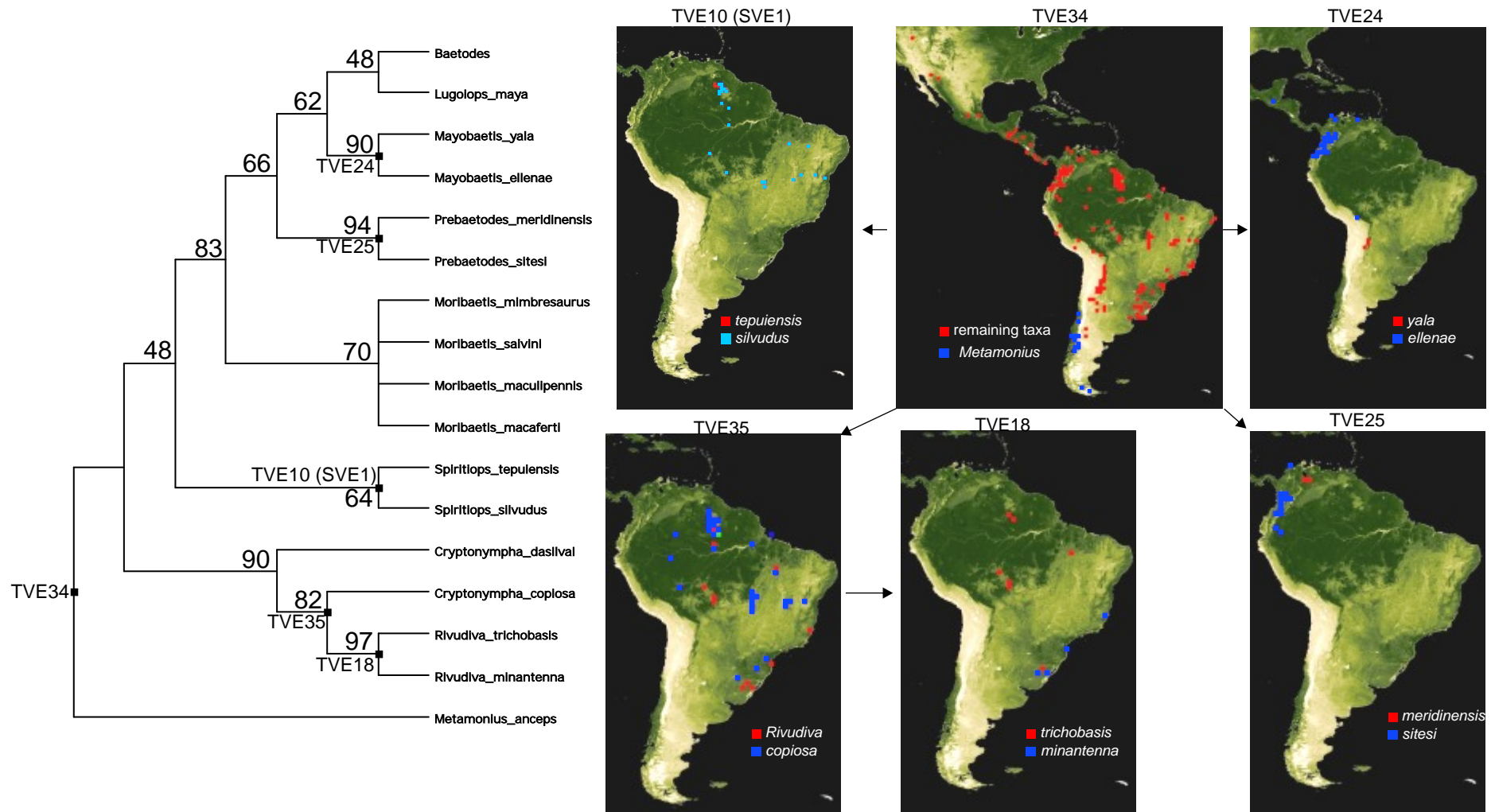


Figure S5, *Baetodes* complex (Niето 2016). Trees, vicariant events and TVEs found. Numbers on the clades are group support values obtained from 250 replicates of jackknife (only positive values shown).

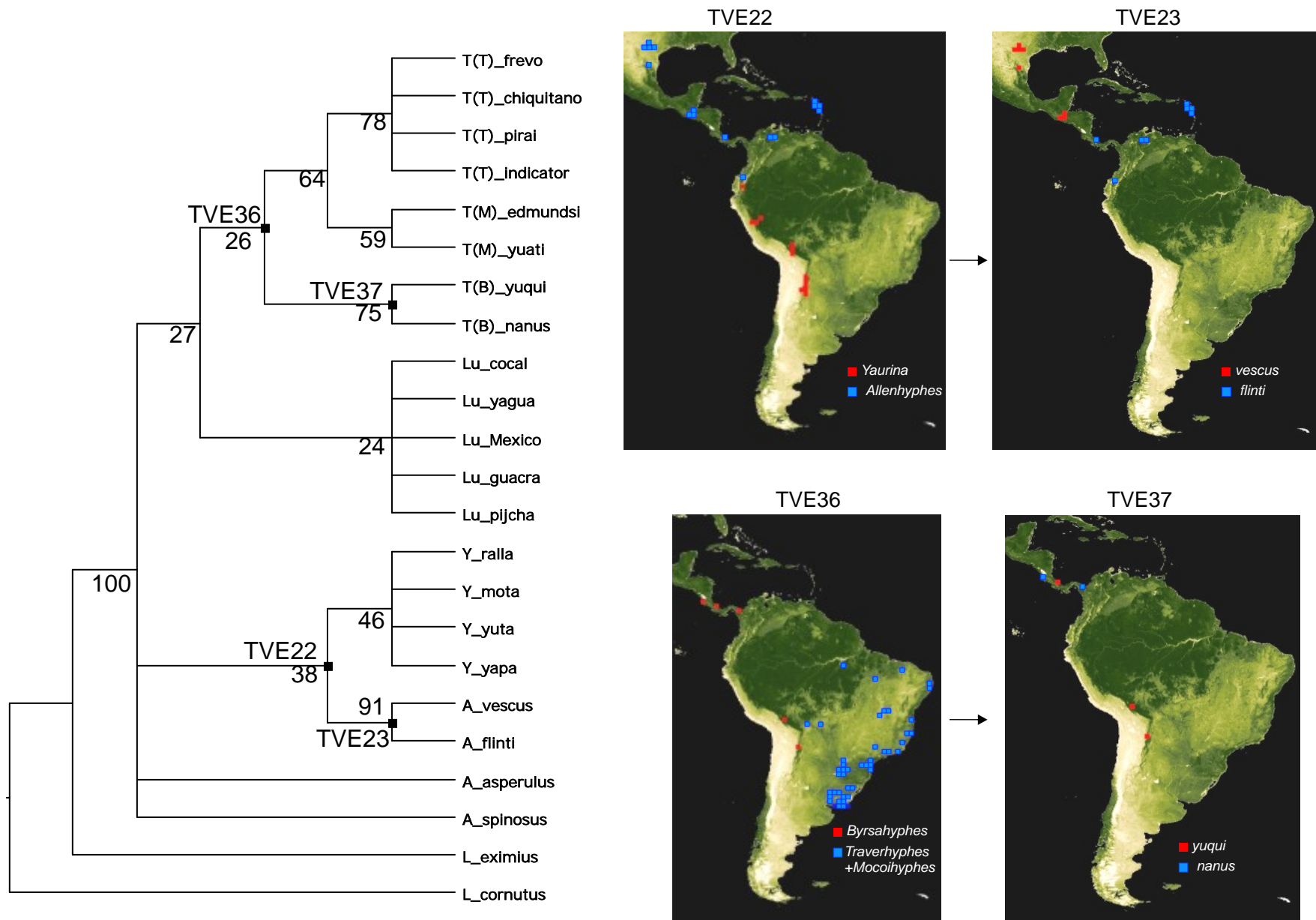


Figure S6, *Alenhyphes-Traverhyphes* group (Molineri 2004). Trees, vicariant events and TVEs found. Numbers on the clades are group support values obtained from 250 replicates of jackknife (only positive values shown).

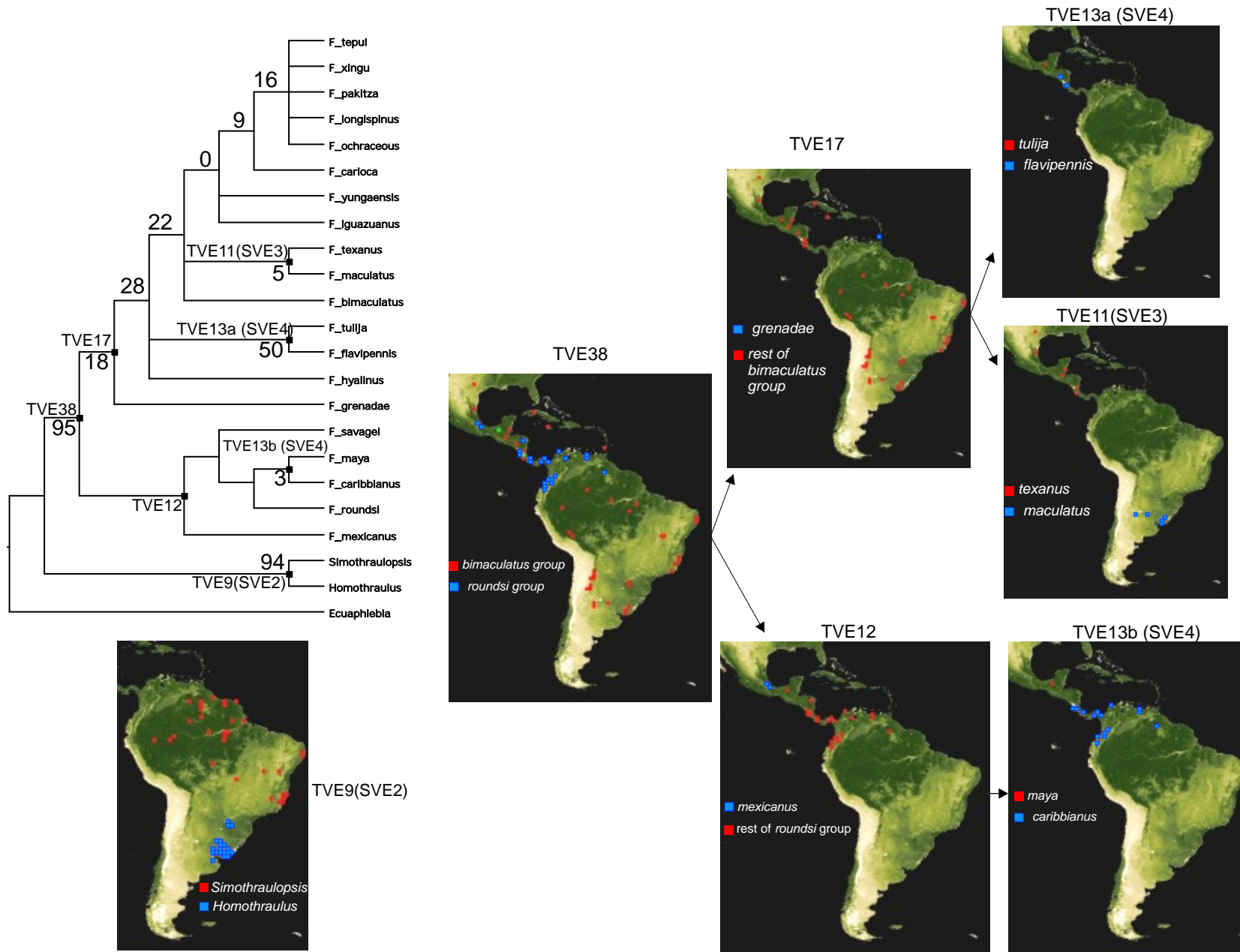


Figure S7, *Farrodes* Peters (Domínguez & Zúñiga 2009). Trees, vicariant events and TVEs found. Numbers on the clades are group support values obtained from 250 replicates of jackknife (only positive values shown).



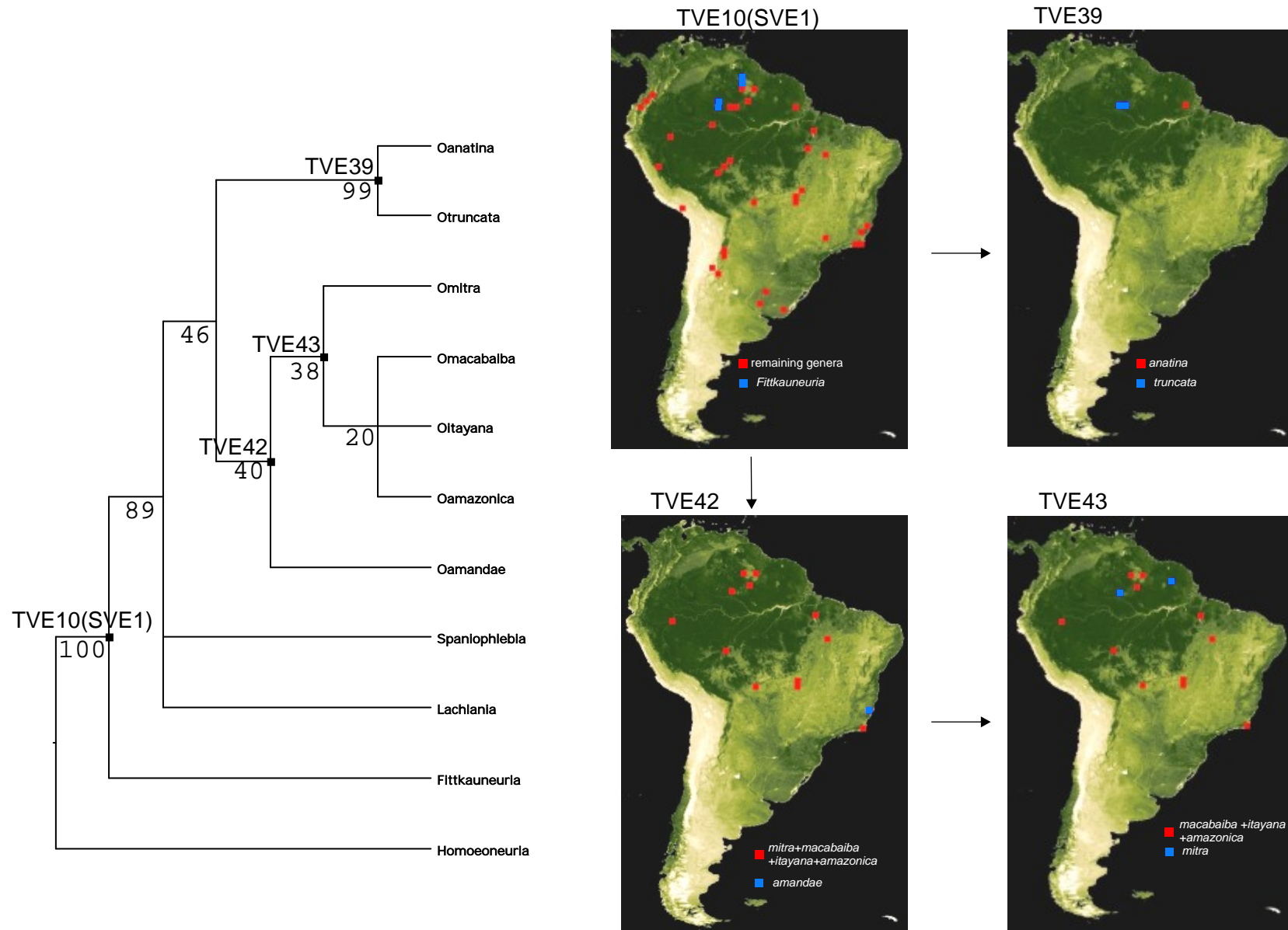


Figure S8, *Oligoneuria* (Salles et al. 2013; Massariol et al. 2015). Trees, vicariant events and TVEs found. Numbers on the clades are group support values obtained from 250 replicates of jackknife (only positive values shown).

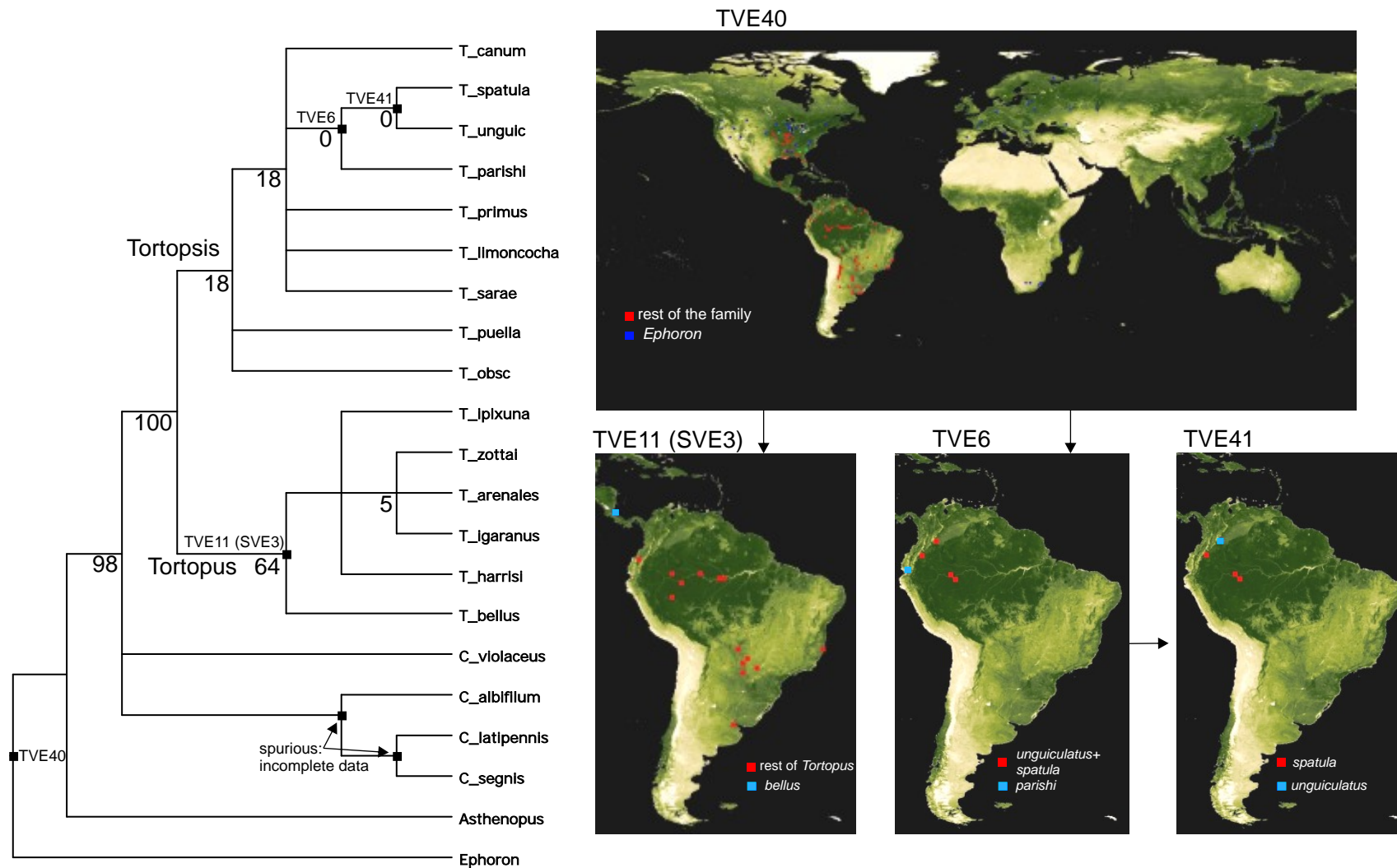


Figure S9, *Tortopsis* and *Tortopus* (Molineri 2010). Trees, vicariant events and TVEs found. Numbers on the clades are group support values obtained from 250 replicates of jackknife (only positive values shown).

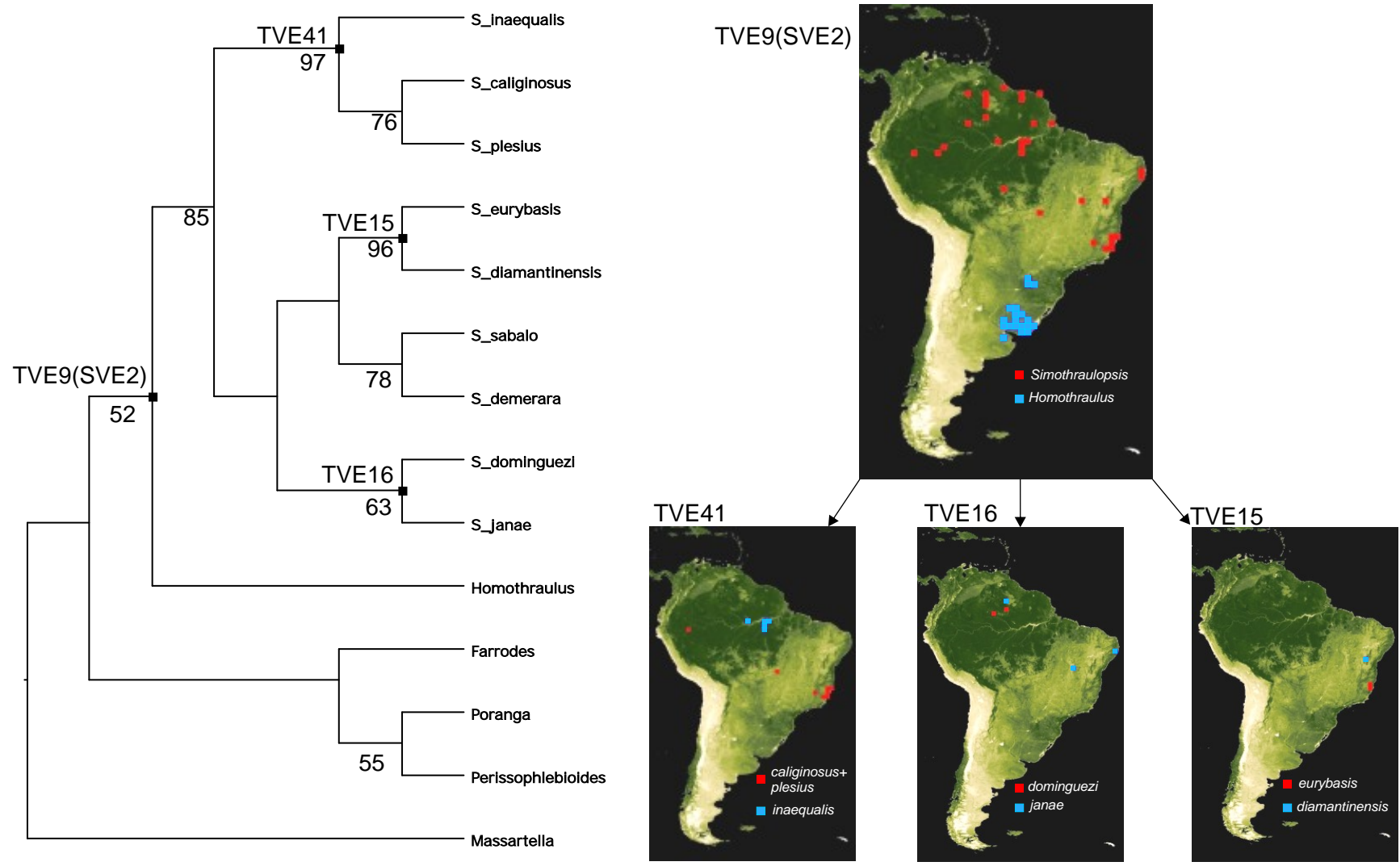


Figure S10, *Simothraulopsis* (Nascimento et al. 2017). Trees, vicariant events and TVEs found. Numbers on the clades are group support values obtained from 250 replicates of jackknife (only positive values shown).